

The top section of the image features a background of a modern building's facade with a repeating diamond-shaped pattern. The word "ARISE" is prominently displayed in a large, bold, blue sans-serif font, centered within a triangular frame formed by the building's architecture.

# ARISE

2020 REPORT TO THE COMMUNITY

DOING  
BUSINESS

*In a new way!*

# ARISE

## 2020 REPORT TO THE COMMUNITY

For more than 40 years, ARISE has embraced change, whether it was adding programs, moving locations, working with new partners or anticipating a different business environment. But no one could have guessed the changes in store in 2020, as the COVID-19 pandemic first unfolded and continues to dominate our lives. Adapting to a changing environment is nothing new for the people we serve. Adapting is what ARISE does best.

At ARISE, our mission is to work with people of all abilities to create a fair and just community in which everyone can fully participate. All ARISE services and programs depend upon the human touch; the person who comes to ARISE is in charge of the services and supports he receives. As an Independent Living Center, we meet people where they are literally and figuratively, and everything we do is community-based.

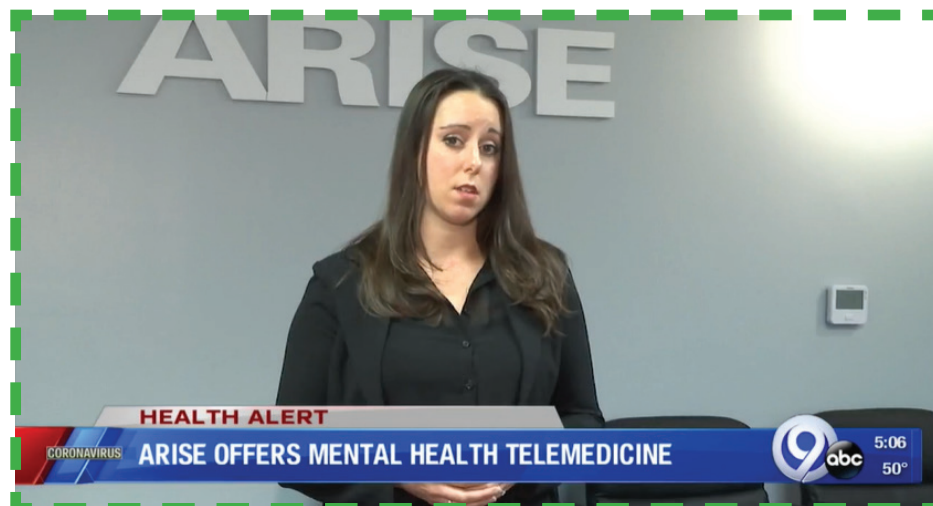
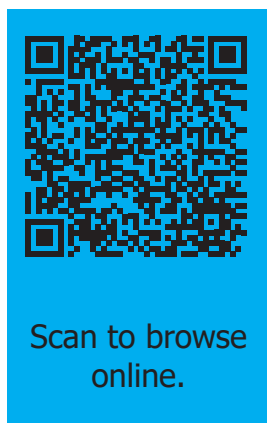
But what to do when the mandate is to stay at home, stay out of the community, and keep a social distance?

As an essential business, ARISE never stopped serving. In the space of a week, we transitioned our mental health, Independent Living and other services to telehealth and remote platforms. Our staff largely worked from home, but they stayed in close contact with their individuals and clients, meeting their needs in creative ways. Mental health therapists delivered counseling sessions in off-hours as families worked and schooled at home during the day. Advocates delivered necessary items to homes when our Personal Care Bank was closed to the public. ARISE kept its doors open in its main Syracuse location.

What makes ARISE special is that we are organized and directed by people with disabilities; we inhabit the disability community that we serve. The pandemic is making the logistics of our work challenging, without a doubt, but our fundamental connection to the community is strong.

Stress from dealing with a deadly pandemic resulted in a significant increase in demand for our mental health services. NewsChannel 9 was quick to report on ARISE's ramped up services.

Click on the picture to watch.





93Q, the popular Central New York radio station, also picked up the story of how ARISE was quickly responding to a community need.

ARISE Director of Clinical Services Kristen Miguel was featured in newscasts during the first week in April and on 93Q's "Street Talk" program.

**Click on the picture to hear Street Talk**  
(Miguel's interview can be found 8:10 into the program)  
(<https://soundcloud.com/93qsyracuse/street-talk-41020>)



Scan to browse online.

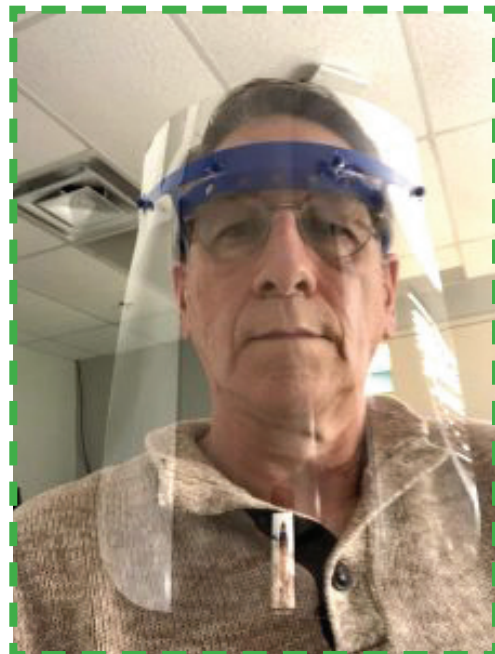


While staff at ARISE were teleconferencing with Central New Yorkers in need of services ranging from mental health counseling to employment to consumer-directed personal assistance, the needs of the community's first responders and caregivers were also on their minds. Shortages in personal protective equipment (PPE) spurred ARISE Adaptive Design (AAD) into action. AAD's fabricator Tracy Fleming wasted no time in helping out these heroes with face shields produced at ARISE.

**Click on Tracy's picture**  
**to get the full story→**



Scan to browse  
online.



(<https://ariseinc.org/addressponse/>)



# ARISE Adaptive Design

At the start of the fiscal year, in June 2019, we unveiled the ARISE Adaptive Design Center. The Adaptive Design Center creates tools that people with disabilities can use to improve their independence. Using technology to facilitate independent living is nothing new for people with disabilities.

Click on Picture  
to watch video.



Scan to browse  
online.



The current pandemic underscores the importance and versatility of accessibility. For example, people appreciate the fact that they do not have to touch a doorknob when the door opens automatically. People now use sinks and toilets that are fully automatic. More and more people are using the accessibility features on their smart phones to make communications, shopping and work easier. These inventions were designed to meet the needs of people with disabilities. Many were adopted after the Americans with Disabilities Act (ADA) became law in 1990. ARISE participates in celebrations to mark the anniversary of the ADA. The celebration also reminds people that more is needed to ensure the rights of those with disabilities.

## ARISE Advocacy

To mark the Americans with Disabilities Act (ADA) anniversary in Central New York, proclamations are issued, parades are organized and issues are raised. July 2019 was no different. In 2020, those celebrations became virtual.



Click on Picture  
to watch video.



Scan to browse  
online.

# ARISE Ombudsman Program

The effects of COVID-19 are especially profound for people who live in skilled nursing facilities. The ARISE Ombudsman program helps resolve complaints, provides information about rights, and advocates for high standards of quality care. When families and friends were banned from visiting, the Ombudsman program stepped up its services.



Scan to browse online.

## ARISE at the Farm

Physical fitness and recreation are important ingredients of an independent life. Horseback riding, animal husbandry, crafts, fishing, nature walks and making lifelong friends are what makes ARISE at the Farm a gem in our community. Two cherished events at the Farm were the Horse Show and the Fall Barn Dance!



Click on Picture  
to watch video.



Scan to browse  
online.





# ARISE Changes

As we packed moving boxes and scheduled construction, ARISE remained fully open for business in 2019 as we completed major projects. The move of the Oswego offices resulted in a new, bigger and more visible location. Major renovations at ARISE's main offices in Syracuse were completed thanks to a \$1 million New York State Nonprofit Infrastructure Capital Investment Program Grant. The newly renovated offices make room for more services and programs to offer our community. In the coming year, look for change in Madison County as we consolidate our operations in an interdisciplinary Independent Living Center at ARISE at the Farm.



Eliza Johnson and Mary Kate Menges at ARISE Open House

Click on this Picture  
to watch video.



Scan to browse  
online.

ARISE Oswego moves to Creekside Plaza, 293 State Route 104.



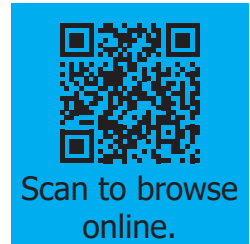
Renovations at the ARISE offices at 635 James Street, Syracuse.



# A Message from the CEO

So, how did the agency come through this year of change and what is ahead? Tania Anderson is the CEO of ARISE.

**Click on Picture  
to watch video.**



In the 2019 ARISE Annual Report, I wrote about serendipity and the hard work we do to be in the right place at the right time. Writing this mid-way through 2020, in a world rocked by a pandemic, economic downturns and racial protests, it seems as though we all are in the wrong place at the wrong time.

Not so fast.

This time of crisis will teach us many things, and as time passes we will learn more. Even in the middle of it, however, ARISE is thinking fast and acting quickly to do business in a new way and provide essential services. When the "right place" for many of us was at home, ARISE transitioned to telehealth and remote services. Our mental health clinic set up telephone and internet platforms in the space of a week to provide continued counseling and meet increased demand for mental health supports. Nearly all of our staff shifted to working from home, creatively delivering the same high-quality services as they had from an office. Our outreach to people with disabilities became even more deliberate and frequent, so we could be in the right place at the right time for them.

The COVID crisis is further exposing stark realities that only underscore the importance of Independent Living, the bedrock of all we do at ARISE. We know the pandemic disproportionately hurt people living in institutions. For more than 40 years, ARISE has worked to keep people in the community and out of institutions. We know that the pandemic disproportionately hurt communities marginalized because of age, race or disability. For more than 40 years, ARISE has worked as a civil rights organization to give equal access to all people.

We always knew we were essential. And now the world better knows it is essential to respect the power of every person's voice, every person's value, here in the community.

Tania Anderson  
ARISE CEO

# A Message from the Board President

On New Year's Day 2020, Agnes McCray, a long-time advocate for people with disabilities in Central New York, became the President of the ARISE Operating Board.

## ARISE



For 34 years, I've been part of ARISE and its Board President for the past 6 months. ARISE's mission is about success, independence, and self-sufficiency for the participants that we serve. ARISE has always been on the cutting edge and the forefront with its services and programs. ARISE continues to evolve and create new programs such as Adaptive Design and After-School Respite.

Due to COVID-19, the agency has had to operate in new ways. For example, although this year's dinner was postponed, through the outstanding work of our dinner committee, we created our "non-dinner" event to post on social media. Next year, the committee hopes to surpass 2019's highest grossing event!



**Agnes McCray**

Our employees, Board, and CEO Tania Anderson have continued to work tirelessly through the COVID crisis to maintain a quality of service that is unmatched and ensure ARISE is always in a place to succeed.

Please join me in supporting the ARISE family! [Visit ariseinc.org.](http://ariseinc.org)



# 2019 Fiscal Year

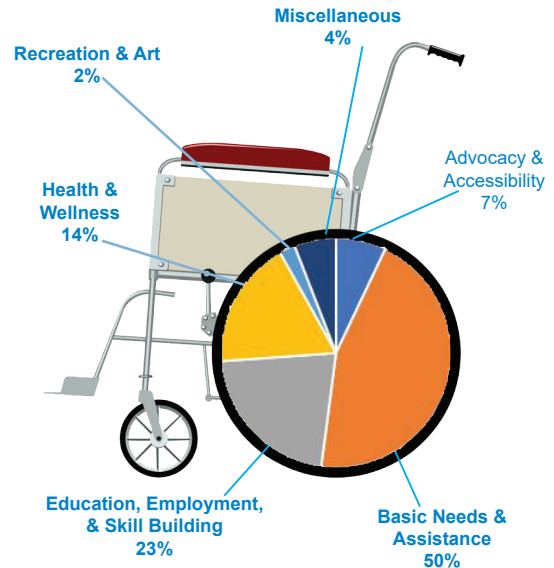
## BALANCE SHEET

### ASSETS

Current Assets	\$5,676,652
Property & Equipment	\$2,325,704
Endowment Investments	\$51,424
Investment in LIFEPlan CCO, NY, LLC	\$100,000
<b>Total Assets</b>	<b>\$8,153,780</b>

### LIABILITIES AND NET ASSETS

Current Liabilities	\$3,136,037
Long-Term Liabilities	\$602,994
Net Assets	\$4,414,749
<b>Total Liabilities and Net Assets</b>	<b>\$8,153,780</b>



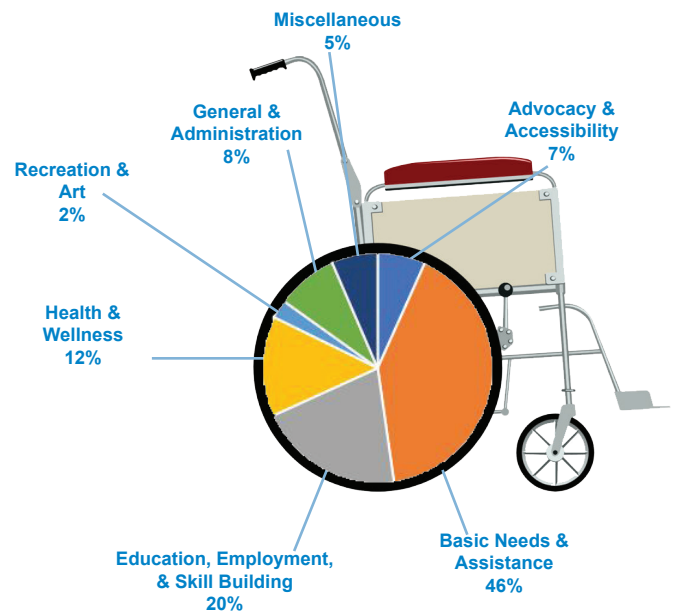
## REVENUE

### REVENUE

Advocacy & Accessibility	\$1,699,754
Basic Needs & Assistance	\$10,885,185
Education, Employment, & Skill Building	\$5,266,370
Health & Wellness	\$4,363,775
Recreation & Art	\$535,232
Miscellaneous	\$1,418,191
<b>Total Revenue</b>	<b>\$24,168,507</b>

### EXPENSES

Advocacy & Accessibility	\$1,606,610
Basic Needs & Assistance	\$9,803,322
Education, Employment, & Skill Building	\$4,894,369
Health & Wellness	\$3,359,117
Recreation & Art	\$621,713
General & Administration	\$2,066,002
Miscellaneous	\$1,551,934
<b>Total Expenses</b>	<b>\$23,903,067</b>



## EXPENSES

ARISE and the ARISE Foundation are deeply grateful for the generosity of the individuals, organizations and businesses who support our mission in Onondaga, Oswego, Madison, Cayuga and Seneca counties. The following is a list of some of our donors who gave between July 1, 2018 and June 30, 2019. Thank You!

**\$10,000 to \$25,000**

Tania S. Anderson  
Anonymous  
Anonymous  
G & C Food Distributors and Brokers,  
Inc.  
Novelis Corporation  
Rural Health Network of Oswego  
New York  
Dr. Selma Sheridan

**\$5,000 to \$9,999**

P. Drescher Co. Inc.  
Susan & Edward Judge  
Exelon Generation  
Anthony Malavenda & Martine Burat  
Fund  
The M&T Charitable Foundation  
PPC Broadband, Inc.  
Utopia Club Charity Golf Tournament  
Pathfinder Bank

**\$2,000 to \$4,999**

Mary Anne Agan  
BNY Mellon Corporation's Community  
Partnership  
The Bonadio Group  
Bond, Schoenack & King, PLLC  
Bottar Law, PLLC  
Bousquet Holstein PLLC  
Brown & Brown Empire State  
DeWitt Community Church  
Fifth Generation, Inc. (Tito's  
Handmade Vodka)  
Haylor, Freyer & Coon  
Ronald Jaeger  
Bettina & Timothy Lipphardt  
Kathleen M. and Peter E. Naktenis  
Family Foundation, Inc.  
Reefer Compressor and Parts, Inc.  
SEFCU  
Karen A. Stanley  
Wegmans Food Markets, Inc.  
Richard Worrell General Agency, LLC

**\$1,000 to \$1,999**

ACC Technical Services  
Barclay Damon, LLP  
Marcel Bingham  
M. Daniel Bingham & M. G. Hamner  
Carrols Restaurant Group, Inc.  
Columbian Foundation

Compass Credit Union  
Michael & Laura Cook  
Eaton Corporation  
Jacqueline Fish  
David Gates  
Gutchess Lumber Co., Inc.  
Al & Cecile Harnois  
Maurie Heins  
Hillside Park Real Estate, LLC  
Hill-Rom, Inc.  
Thomas & Lynne McKeown  
Mediacom Communications  
Corporation  
Jane Murphy  
Gerald & Ann Marie Myers  
Network For Good  
Operation Northern Comfort  
Syracuse University Division of  
Public Affairs  
Ara & Laura Tadevossian  
James V. Tesoriero Charitable Fund  
Maria A. Visco  
Janice & Giovanni Vitale  
Westminster Presbyterian Church

**\$500 to \$999**

Frank Albanese  
Alexander & Catalano  
AXA Foundation  
Sharon & Joseph Bennett  
Central Square Masonic Lodge #622  
Betty DeFazio  
William DeLapp  
David & Nicole Dreverman  
Fidelity Charitable  
Sheila & Richard Fraser  
FrontStream (formerly TRUiST)  
Grace Ghezzi  
Giovanni's Tuxedos, LLC  
Dr. Thomas S. & Melanie Hartzheim  
HR Works  
JSD Associates  
James & Patricia Karasek  
LIFEPlan CCO NY  
Candace & John Marsellus Fund  
Jim Marshall Farms Foundation, Inc.  
Doc Jim & Ruth Marshall  
Merrill Lynch Wealth Management  
The Towers/Capron Group  
Andrew Needle  
Oswego County Opportunities, Inc.

Mary Pham  
Jim A Stagnitta Electric, Inc.  
The Leading Element  
United Way Of Central New York  
Anonymous & Designating Donors  
Heather Vitale  
Whelan and Curry Construction  
Services, Inc.  
YourCause

**\$200 to \$499**

Arc of Onondaga  
Chris Arnold  
Horace & Doris Backus  
Black Button Distilling  
Central New York Community  
Foundation  
Adam Chehovick  
Jeff Chin  
William & Carol Crist  
Ceme & James Curley  
Dr. Nienke Dosa  
Holly Earl  
Susan Eldred  
Scott & Linda English  
Brett & Lisa Fingland  
Sue Finkelstein  
Daniel & Deborah Gardner  
Mr. & Mrs. Dale Gates  
Winston E. Gaum  
Shayna Gersch  
The Gifford Foundation  
The Gorman Foundation  
Gray Wolves Hockey  
Grimshaw Elementary School  
Barbara & Harry Hamer  
Hansen's Advisory Services, Inc.  
Therese Howington  
INFICON, Inc.  
Josall Syracuse, Inc.  
Arlene Kanter  
Claire Kennedy  
Laura & Paul Little  
Susan M. Loevenguth  
Arlene Marko  
Mary J. Mastriano  
Lori & Gerard McCrohan  
Daniel McGough  
Colleen M. McKeon  
Rebecca Mehkic

## **\$200 to \$499 continued**

Kristen Miguel  
Patricia Morgan  
Nascentia Health  
Nickels Energy Solutions  
Lucy Oakes  
Onondaga Cycling Club  
Oswego Rotary Club  
Andrea & Robert Pagano  
Joanne M. Paino  
Paradigm Solutions, LLC  
Piccolo Properties LLC  
Jay A. & Kimberly Posenauer  
Marvin & JoAnn Reed  
Margaret Romer  
Betty & Louis Roy  
Steven & Kathleen Schill  
Amy Schiminske  
Marilyn & John Skopek  
SUNY Upstate Medical University  
Ronald & Cynthia Tascarella  
Edmond Theobald  
Katy Turner  
Allen Tuttle  
Upstate Shredding/Weitsman  
Shredding  
Cheryl Widay  
United Way of Greater St. Louis, Inc.  
United Way of Broome County, Inc.  
Weedsport Central School District

# GRANTS



**The City of Auburn Community Development Block Grant** –  
Freedom Camp and Home Access

**The Jim and Juli Boeheim Foundation** – After School Respite  
**Central New York Care Collaborative** - Innovation Fund FOOD  
Project with 28 partner agencies

**Central New York Community Foundation** – Staff Training Grants

**D. E. French Foundation** – Freedom Camp

**Stanley W. Metcalf Foundation** – Freedom Camp

**Craig H. Neilsen Foundation** – Adaptive Design

**New York State Council on the Arts** - UNIQUE

**Onondaga County Community Development Block Grant** –  
Home Referral and Advocacy

**Christopher and Dana Reeve Foundation** – Adaptive Design

**The John Ben Snow Foundation** – Adaptive Design

**United Community Chest of Cazenovia, Fenner & Nelson** -  
ARISE at the Farm

**United Way of Cayuga County** – Freedom Camp

**United Way of Central New York** – Adult Career & Continuing  
Education Services, Independent Living & Rehabilitation, Crisis  
Management & Prevention

**United Way of Greater Oswego County** – Advocacy

## **MEMORIALS**

We would especially like to remember two friends of ARISE:



### **Matteo Lester**

October 13, 2014 – October 2, 2018

During Matteo's far too short life, he benefitted from the Adaptive Design Program. ARISE was honored to be the recipient of numerous generous gifts in his memory.

### **Marian Miller**

August 5, 1932 to February 3, 2019

Marian worked at ARISE for 30 years. She was the "face" of the ARISE Loan Closet that is now named in her honor. Marian was a fierce advocate of Independent Living and always had a smile and story to share.





# ARISE

## Our Locations

### Main & Onondaga County Office

635 James Street  
Syracuse, NY 13203  
Office: (315) 472-3171

### Oswego County Office

Creekside Plaza  
293 State Rt. 104  
Oswego, NY 13126  
Office: (315) 342-4088

### Fulton Mental Health Office

113 Schuyler Street, Suite 2  
Fulton, NY 13069  
Office: (315) 887-5156

### ARISE at the Farm/Madison County Office

1972 New Boston Rd  
Chittenango, NY 13037  
Farm: (315) 687-6727  
Office: (315) 363-4672

### Cayuga/Seneca County Office

21 Lincoln Street  
Auburn, NY 13021  
Office: (315) 255-3447

Visit our website at:  
[www.ARISEInc.org](http://www.ARISEInc.org)

## CONNECT WITH US:



ARISEcny and ARISEattheFarm



@ARISEcny and @ARISEattheFarm



[youtube.com/ARISEcny](https://youtube.com/ARISEcny)



@ARISEcnyinc and @ARISEattheFarm