

UNIQUE

ARISE ART & LITERARY MAGAZINE

2017





YIN AND YANG KOI

CHARLES FITZPATRICK

ACRYLIC PAINT | 20" x 24"

Charles Fitzpatrick, 30, has autism and lives in Martville with his family, as well as four snakes, five frogs, one lizard, and a cat named Bandit. This painting is inspired by the Chinese concept of Yin and Yang and reflects his love of nature. *Previously in UNIQUE 2010 and 2015-2016.*

UNIQUE

SPECIAL THANKS

PREMIER SPONSOR

The Drescher Corporation

SEVENTEENTH EDITION SPONSOR

J.W. Burns & Company Investment Counsel

PATRONS OF THE ARTS

Tania S. Anderson
Haylor, Freyer & Coon, Inc.

FRIENDS OF UNIQUE

Brown & Brown Empire State
INFICON

MEDIA SPONSORS



OPENING EXHIBIT PARTNER



EVERSON MUSEUM OF ART

ARISE

ALL AGES. ALL DISABILITIES. ALWAYS BY YOUR SIDE.

We work to create a world where all people, regardless of disability, have the power to make their own life choices and achieve their dreams.

Since 1979, we have provided opportunities so that people with disabilities can participate in the community and live independently. ARISE is . . .

Community

...a community of advocates, committed to ensuring that every person, regardless of disability, is able to live a full and independent life.

Independence

...building ramps for families in need so that they can reclaim their freedom and independence.

Opportunity

...connecting employers with qualified workers who happen to have a disability.

Empowerment

...empowering children and families through mental health services.

Adventure

...whether it's flying down the slopes at Toggenburg or horseback riding at ARISE at the Farm, we're providing access to year-round adventure.

Hope

...from helping families move out of crisis situations to transitioning people out of nursing homes, we're providing security, safety, and hope.

Choice

...our person-centered approach maximizes choice and self-determination. Individuals are always at the core of everything we do.

Change

...by eliminating physical barriers and changing attitudes, we're creating a more inclusive community.

You

...we couldn't do it without supporters, volunteers, advocates, and friends like you. Together, we can change the world.



CONNECT WITH US

ariseinc.org

See all that #ARISEis at ariseis.org



ARISEcny and ARISEattheFarm



@ARISECNYinc & @ARISEattheFarm



[youtube.com/ARISEcny](https://www.youtube.com/ARISEcny)



@ARISEcny & @ARISEattheFarm

WAYS YOU CAN DONATE

Donate Online

Visit our website at ariseinc.org

Donate by Mail

Send your donation
(payable to the ARISE Foundation) to:

ARISE Foundation
635 James Street
Syracuse, NY 13203



CELEBRATING INDIVIDUALITY



Art is power. Art is risk. And, of course, art is beauty.

Whenever a person writes a story or poem, she takes a risk. Whenever a person creates a painting, a drawing or some other image, he takes a risk. The layers of risk unfold like the petals of a flower: the risk of exposing something intimate, the risk of rejection, the risk of failure.

And when the work is complete, there is power: the power of overcoming fear, the power of self-determination, the power of giving something beautiful to the world. The work itself becomes a vessel of power, conveying something different to every person who encounters it. We describe art as powerful so often that the word almost becomes cliché. As in any cliché, however, there is truth.

As an Independent Living Center, ARISE at its core is about giving people with disabilities power to decide how they want their lives to unfold and what services and tools they will receive to accomplish the goals they set. We never lose sight that rights for people with disabilities are civil rights, which of course concern the power to be a full member of our world.

For seventeen years, ARISE has proudly published UNIQUE magazine, recognizing that the risk and power of art is magnified when that work is created by people society traditionally pushed to the margins. In these pages, you will see and read work that stands on its own merits, regardless of the artist's backstory. But when you read that backstory, you will get a glimpse of the risk and power involved in producing and sharing the work.

Don't let your experience end there. Take what you see, read and learn in these pages and carry it forward into the world. Realize that all people, regardless of ability, can take risk and create art. Realize that we are a better and more beautiful world for it.

It is my honor and privilege to invite you within the pages of this UNIQUE magazine.

TANIA S. ANDERSON
CHIEF EXECUTIVE OFFICER, ARISE

2017 UNIQUE EDITORIAL BOARD

Steffi Chappell
Everson Museum of Art

Dan Cummings
NewsChannel 9 WSYR

Nienke Dosa, MD
SUNY Upstate Medical University

Elizabeth Dunbar
Everson Museum of Art

Sean Kirst
Upstate NY Journalist, Author and Storyteller

Natalia Lester
Community Member

Agnes McCray
ARISE & ARISE Foundation Board Member

Diana Pelletier
ARISE Foundation Board Member

Peyton Sefick
Burton Blatt Institute, Syracuse University

Caitlin Tufts
Haylor, Freyer & Coon

Diane Wiener, Ph.D, LMSW
Syracuse University

KEY STAFF

Tania S. Anderson
Chief Executive Officer

UNIQUE

Gigina Long
Editor

Katie Hanlon
Editorial Assistant

Cynda Penfield
Editorial Assistant



DIANA PELLETIER
ARISE FOUNDATION
BOARD MEMBER

The old proverb says,
"Beauty is in the eye
of the beholder."
This seems sensible
because we all come
at life from different
places, backgrounds

and perspectives. Each of us can look at a piece
of art, read a written work, hear a composition
of music and it will mean something different
depending on our life experiences. Our viewpoints
are as individualized as we are.

In light of the amazing work to be explored in
this magazine, I would like to offer another view,
"Healing is at the core of art and is in the soul of
the artist." As someone who became an artist only
after sustaining a traumatic injury and becoming
disabled, I have found that engaging works of art
can be incredibly healing. This is nowhere more
true, in my opinion, than for the artist themselves.
Producing a piece of art can be an act of therapy
for the body and the soul. Creating art can help to
strengthen muscles and hand-eye coordination.
Submersing oneself in the creation of a work of
art can be healing for one's spirit, one's emotional
health.

UNIQUE is an amazing gift to this community.
It encourages artists with differing abilities to
dive head first into the healing work of creating
something new. It also gives these artists a
forum in which to share their personal journeys,
sometimes from brokenness to healing through
their work. This exhibit and publication allows
people to be consumers of a variety of art in all its
forms that they might not otherwise experience.

I invite you, as you turn these pages, to truly
engage in the pieces you see and read, to be
open to the emotions, experiences and maybe
even the healing they can bring to you.

UNIQUE

FEATURED ARTISTS

FRONT COVER: **Charles Fitzpatrick**, *Yin and Yang Koi*

BACK COVER ARTWORK: **Anna-Marie Kuiper**, *4 Stages of Despair*

BACK COVER POETRY: **Stephanie Montero**, *Funhouse Mirror*

ARISE at the Farm Spring Break Rec Program , <i>Scrambled Eggs</i>	27	Jessica Meicht , <i>The Moon</i>	18
Sabrina Biggs , <i>Lilac</i>	4	Amber Micek , <i>Space Song</i>	1
Nicholas Bonacci , <i>Untitled</i>	14	Stephanie Montero , <i>Funhouse Mirror</i>	15
Amanda Chamberlain , <i>Untitled</i>	29	Joseph Muldowney , <i>The Coral Reef</i>	17
Craig Champlin , <i>Love Birds</i>	5	Daniel O'Connor , <i>Tree Frog</i>	22
Mitch Ciarpelli , <i>Anglerfish</i>	3	Pamela Parsons , <i>Skater Girl</i>	26
Mary Coogan-Huling , <i>ADRIFT</i>	2	Elizabeth Pelletier-Perra , <i>I Give You My Smile</i>	12
Jennifer Dunlop , <i>Nature Shows Emotion</i>	6	Frances Pizzola , <i>Prickley Pear</i>	20
Charles Fitzpatrick , <i>Yin and Yang Koi</i>	Front Cover	Oramella Putman , <i>Recipe Box</i>	19
Fran Gavin , <i>Love Forest</i>	8	Marissa Ramos , <i>Jellyfish</i>	28
Vicky Giangotti , <i>Sunset Horse</i>	14	Brianna Rhodes , <i>A Touch of Radiance</i>	21
Zachary Grillo , <i>Desert Sunset</i>	15	David Robinson , <i>Mysterious Sky</i>	13
Derek Grindle , <i>Dreams</i>	7	Kathleen Roland , <i>Women's Jingle Dress Contest Dance</i>	23
Jeffrey Harrington , <i>I'm a Good Listener</i>	8	Hannah Rufo , <i>Stone Wall in Fall</i>	24
Leonard Hires , <i>The City that Never Sleeps</i>	9	Joseph Rufo , <i>Gahunda</i>	24
Joyce Howard , <i>A Rose is a Rose</i>	3	Chase Salmons , <i>Mr. Squirrel</i>	21
Brianna Joy Hurchla , <i>Mysterious</i>	11	Katelynn Schultz , <i>Untitled</i>	2
Amanda Julian , <i>Untitled</i>	11	Peter Smith , <i>Memories of Fishing</i>	22
Erin Kelley , <i>The Waters of St. Croix</i>	29	Robert Szpak , <i>Multi-Colored, Multi-Faceted Man (A Self-Portrait)</i>	27
Benjamin Kellogg , <i>Puzzle</i>	10	Minnie Thompson , <i>Paradise</i>	19
Karen Koegel , <i>Spring's First Bloom</i>	20	Renee Thornton , <i>The Happy Blues</i>	6
Jessica Koll , <i>Family Tree</i>	5	Karen Voas , <i>On the Bayou</i>	9
Kanishk Krishnan , <i>You Are You</i>	30	Elizabeth Watson , <i>Angels in Heaven</i>	7
Kaushik Krishnan , <i>The Floral Dance</i>	23	Josh Webster , <i>Karma</i>	26
Anna-Marie Kuiper , <i>4 Stages of Despair</i>	1	Jeremiah Werden , <i>Motorcycle</i>	28
Jean LeoGrande , <i>15th Century in the Garden</i>	13	Katie West , <i>Hummingbird Happiness</i>	25
Tony LoBello , <i>Storm at Sea</i>	4	Charlie Williams , <i>Spinning Wheels</i>	16
Richelle Maki , <i>Anxiety Spiral</i>	25	Timothy Wobus , <i>Storm</i>	17
James McCampbell , <i>The Ceremony Before the Procession</i>	16	Tanner Woodland , <i>Electric Light</i>	30

4 STAGES OF DESPAIR

ANNA-MARIE KUIPER
Fiber | 34" x 48"



SPACE SONG

AMBER MICEK
Watercolor | 8" x 5.5"



Anna-Marie Kuiper uses art as an outlet to express her feelings. The figures in this piece depict a sequence of despair: the first figure is screaming for help; the second figure is desperate; the third figure realizes help is not coming; and the final figure has collapsed in anguish. *Previously in UNIQUE 2012-2016.*

Amber Micek, 39, created this piece to reflect her love of animals and the universe. She comes from a family of artists and creates art to overcome her feelings of isolation caused by her disability. *Previously in UNIQUE 2010-2016.*



UNTITLED

KATELYNN SCHULTZ

Ceramic | 16.5" x 16.5" x 1.5"

A solitary water craft is abandoned on a small, quiet lake without benefit of her guide. The absence of weathered oars in rusty pockets no longer provide a path for safe travel and she aimlessly drifts with no direction, no instruction.

The aluminum underside has been scarred by years of rough rocks that have cut deep, and wide; indentations clothe the exposed body. A lone seat is hard and void of sentiment while her interior catches unwanted debris.

A vessel left to float and fend for herself.
A child forgotten in a place called home.

ADRIFT

MARY COOGAN-HULING

Katelynn Schultz, 28, does not let her multiple disabilities hold her back. She first fell in love with clay in elementary school. She finds the process to be calming and enjoys the freedom to create without limits. *First year in UNIQUE.*

Mary Coogan-Huling, 59, is from Baldwinsville. She enjoys gardening, stand up comedians, stimulating conversation, and walking with her guide dog. This poem explores feelings of isolation and being misunderstood. *Previously in UNIQUE 2013-2016.*

A ROSE IS A ROSE

JOYCE HOWARD
Mixed Media | 16" x 15.75"



ANGLERFISH

MITCH CIARPELLI
Mixed Media | 18" x 24"



Joyce Howard, 53, lives in Syracuse but is originally from Long Island. The colors in the piece all symbolize different things: the yellow represents friendship and joy, lavender represents love and majesty, pink represents gratitude, and white represents purity. *First year in UNIQUE.*

Mitch Ciarpelli, 65, has been creating art his whole life. He was inspired by the mysterious deep sea creature. To create the painting, Mitch taped off sections and carefully poured the paint onto the piece. *Previously in UNIQUE 2010 and 2012.*



LILAC

SABRINA BIGGS

Pencil, Colored Pencil & Pen | 8.5" x 11"



STORM AT SEA

TONY LOBELLO

Mixed Media | 21" x 17"

Sabrina Biggs, 29, grew up in Syracuse and has been drawing since she was two. She is inspired by Walt Disney and Hayao Miyazaki. Sabrina enjoys traditional and digital drawing, making jewelry, and cosplay. *Previously in UNIQUE 2014-2015.*

Tony LoBello, 72, enjoys bowling, swimming, and traveling. This piece captures the energy he felt during a big storm with huge waves, a dark sky, and lightning. Tony mixed blue paint with thick polymer gel for the water and splattered sand to capture the essence of the storm. *First year in UNIQUE.*

FAMILY TREE

JESSICA KOLL

Mixed Media | 13.75" x 7"



LOVE BIRDS

CRAIG CHAMPLIN

Acrylic | 7.75" x 14"



Jessica Koll, 29, is from Syracuse and has multiple disabilities. Art makes Jessica feel alive, and it is an escape from her depression. This drawing expresses her love for her family as well as peace, unity, and strength. *First year in UNIQUE.*

Craig Champlin, 31, is from Chittenango and has Down syndrome. Most of Craig's paintings have outdoor themes, and he likes bright colors and animals. Craig has always been interested in drawing and is most influenced by the artist Bob Ross. *Previously in UNIQUE 2010 and 2012.*



THE HAPPY BLUES

RENEE THORNTON

Acrylic | 12" x 15"

Echo mournful strains
 A cooing mourning dove
 A symphony of bittersweet love
 And an anthem compose
 In the
 Thorns of a fading rose
 Bowed low to the Earth
 In humble array
 While above in the treetops
 Nature's euphony play
 The wind sets the world's feet in motion
 Nature has its own way of showing
 Emotion
 Thunder rolls; lightning forks across
 The skies
 Dawn breaks to a glorious sunrise
 An orange, yellow, and rosy hue
 A cloudless sky across a skyline blue
 The crashing of waves on the
 Coast of the ocean
 Nature has its own way of showing
 Emotion!

NATURE SHOWS EMOTION

JENNIFER DUNLOP

Renee Thornton, 31, has CHARGE syndrome and is legally blind. She lives with her grandmother in Syracuse and attended the New York State School for the Blind in Batavia, where she took art classes. *Previously in UNIQUE 2009 and 2013.*

Jennifer Dunlop, 23, uses writing as an outlet for her frustrations. She hopes to use her writing to help others who are going through similar difficulties that she has been through. This piece explores how forces of nature mirror emotions that she feels. *Previously in UNIQUE 2007, 2009, and 2010-2013.*

ANGELS IN HEAVEN

ELIZABETH WATSON
Mixed Media | 16.8" x 13.8"



DREAMS

DEREK GRINDLE
Photographic Collage | 20" x 16"



Elizabeth Watson, 24, is from Fayetteville and has cerebral palsy and a seizure disorder. The process of creating this painting helped her cope with the losses she experienced by honoring her loved ones who have passed. *Previously in UNIQUE 2009 and 2011-2016.*

Derek Grindle, 27, has autism and is from Oswego. Derek uses art to express himself because he believes his words don't always match up with what he is trying to say. The distortion in this piece reflects how people can easily misunderstand others. *Previously in UNIQUE 2004-2016.*



LOVE FOREST

FRAN GAVIN

Oil Paint | 12" x 9"



I'M A GOOD LISTENER

JEFFREY HARRINGTON

Oil Pastel | 12.5" x 10"

Fran Gavin, 55, is an Army veteran who uses art and music to help keep his spirits up from the neuropathy, depression, and chronic pain that he experiences. This painting reflects his love of the woods, especially at nighttime. *Previously in UNIQUE 2014-2016.*

Jeffrey Harrington, 26, does not allow his autism and expressive language disorder to interfere with his love of theater, swimming, photography, hiking, video games, movies, and getting to know other people. This drawing is inspired by his passion to find his soul mate. *Previously in UNIQUE 2008-2016.*

THE CITY THAT NEVER SLEEPS

LEONARD HIRES

Oil Paint | 30" x 40"



ON THE BAYOU

KAREN VOAS

Mixed Media | 17.5" x 13.75"



Leonard Hires, 52, was born and raised in New York City. Just as the city never sleeps, Leonard's mind is always running. *Previously in UNIQUE 2003 and 2010.*

Karen Voas, 47, is from Liverpool and has had three brain tumor operations. She credits the David Clark Learning Center with helping her learn how to be more creative and responsible. This piece is part of a tree series the artist has been working on. *Previously in UNIQUE 2011 and 2015-2016.*

I like the thought of one of autism's symbols being a puzzle piece.

My life sometimes feels like a series of puzzles,
or maybe a large one with many parts.

Either way, trying to put my life in order,
and keeping it together, is a full-time job.

A pile of pieces can make me excited, but also a bit anxious.

So many pieces, too many similar shades of color.

"Where do they all go?" I think.

Putting the "frame" together first is the most important part for me;

Without the corner and border pieces in place, I feel lost.

Similarly, my life is "framed" by my family,
my home, and the values I cherish.

Placing all the difficult pieces of my life within this "frame"

Helps me to maintain a sense of normalcy.

Physical issues, from movement to vision and more,
affect me on a daily basis.

I find it hard to put names to faces at times,
even with people I know well.

Some everyday activities are difficult because I forget some steps.

Sometimes I just completely "zone out,"
for reasons I cannot always explain.

Every day it seems I have at least one moment like this.

Life does not always make sense to me,
But I do my best to get along with everyone and
accomplish what needs doing.

Making sense of chaos and restoring order,
Putting the world back together as it should be,
makes me feel better,

Especially once I have gotten all the pieces in place.

My life is full of endless puzzles, mysteries, and riddles.

I can solve some on my own, but I need help with others.

Once I figure them out, though, my anxiety disappears.

I welcome each one as it comes,
As I come closer to completing my life's puzzle.

PUZZLE

BENJAMIN KELLOGG

Benjamin Kellogg, 26, is a freelance writer who has autism. This poem references the puzzle piece as a symbol for the autism community, but also how he sees his own life as a puzzle with many pieces fitting together into a complex picture. *Previously in UNIQUE 2014-2016.*

MYSTERIOUS

BRIANNA JOY HURCHLA

Oil Paint | 28" x 21.5"



UNTITLED

AMANDA JULIAN

Acrylic | 24" x 22"



Brianna Joy Hurchla, 15, loves to make people laugh. She has an auditory processing disorder with a learning disability. She loves spending time with her friends, shopping at the mall, and sitting on the floor in her bedroom to create her art pieces. *First year in UNIQUE.*

Amanda Julian loves pottery, painting, and being creative. She loves bright colors and likes to layer them thickly to create heavy textures in her paintings. Whenever she finishes a painting, she is always excited to show her family and friends. *Previously in UNIQUE 2016.*

I give you my smile
When you are down
A smile is the universal language
Without making a sound

It can connect strangers
Brighten someone's day
Like the stars in the sky
It can light the way

It can turn darkness into day
It can add sunshine on a cloudy day

Sometimes when my disease
Gets to be too much
I get depressed
And long for a kind smile
Or a gentle human touch

I may be alone in this world
Trying to survive
A smile from someone
Makes me feel more alive

When someone takes the time to look at you and smile
It makes you feel special
Even for a little while

For a moment in time
Two people are connected
By that one simple thing
Capable of being done

By every human being

So I give you my smile
To brighten your day
In hope that it helps in some little way
To secretly tell you
Everything will be ok

If you give me a smile back
I know you see ME
And for a moment
Happiness is shared
Between two human beings...

I GIVE YOU MY SMILE...

ELIZABETH PELLETIER-PERRA

Elizabeth Pelletier-Perra, 50, uses poetry to express her thoughts and let others who also have disabilities know that they are not alone. She believes her Multiple Sclerosis and brain aneurysms have helped her express her thoughts and ideas more clearly, as well as become more empathetic to others' situations. *Previously in UNIQUE 2014-2016.*

MYSTERIOUS SKY

DAVID ROBINSON

Graphite & Colored Pencil | 11" x 8.5"



15TH CENTURY IN THE GARDEN

JEAN LEOGRANDE

Acrylic | 16" x 12"



David Robinson, 24, is from Syracuse and has a learning disability. He played with perspective in this piece to help people feel like they are in the scene. He wants the viewers to imagine themselves in the drawing and to decide for themselves what is happening in the mysterious sky. *First year in UNIQUE.*

Jean LeoGrande, 76, is dyslexic and has a brain tumor. She combines her love of history with art in order to create unique pieces that explore the past. *Previously in UNIQUE 2014 and 2016.*



SUNSET HORSE

VICKY GIANGOTTI

Mixed Media | 11" x 14"



UNTITLED

NICHOLAS BONACCI

Drawing | 11" x 8.5"

Vicky Giangotti, 87, likes to participate in all types of crafts. She is inspired by her feelings and current interests. *Previously in UNIQUE 2010.*

Nicholas Bonacci, 30, lives in Whitesboro. He has always had a passion for art and is inspired by things he sees or thinks about during the day. *First year in UNIQUE.*

DESERT SUNSET

ZACHARY GRILLO

Digital | 44" x 35"



FUNHOUSE MIRROR

STEPHANIE MONTERO

Here before this funhouse mirror,
Things are to me a little clearer.
This reflection is not surreal,
Because what I see is what I feel.

Every pain and every ache,
Every twist and every break;
This mirror shows me all that's real,
Because what I see is what I feel.

Zachary Grillo, 30, has autism and is inspired by his father, who taught him everything there is to know about art. This piece illustrates what Zachary imagines an extraterrestrial world would be like in the future when we travel to the stars. *First year in UNIQUE.*

Stephanie Montero, 30, says the funhouse mirror is a symbol for how she feels; while she may look normal or healthy on the outside, she feels very different. She hopes that others with disabilities that are not obvious on the outside can relate to this piece. *First year in UNIQUE.*



THE CEREMONY BEFORE THE PROCESSION

JAMES MCCAMPBELL

Mixed Media | 15.75" x 10"



SPINNING WHEELS

CHARLIE WILLIAMS

Photography | 14" x 24"

James McCampbell, 38, is from Liverpool and enjoys collecting comic books and CDs, watching horror movies, and walking. James believes that his autism plays a role in his art because his obsession with detail paves a way for him to create fully realized work. *Previously in UNIQUE 2015-2016.*

Charlie Williams, 53, loves music. He plays the drums and sings the lead vocals in the David Clark Learning Center Band. These photographs were created with his blinking ring. *First year in UNIQUE.*

STORM

TIMOTHY WOBUS

Acrylic | 17" x 4.5"



THE CORAL REEF

JOSEPH MULDOWNEY

Mixed Media | 11.5" x 14.5"



Timothy Wobus, 33, lives in the Manlius area and enjoys painting, playing the piano, working on puzzles, and listening to music. He has autism, is non-verbal, and uses art to express himself. The colors in his paintings reflect his mood at the moment. *Previously in UNIQUE 2006-2008 and 2010-2016.*

Joseph Muldowney, 43, loves puzzles, music, and watching sports. He used sculpey for the coral, added texture with colored sand, and used polymer gloss for the water. The finished piece is lively, just like the sea. *First year in UNIQUE.*

THE MOON
JESSICA MEICHT

I want you to know,
if anything is wrong,
just look at the moon
and you'll see me.

I promise if you need me
I will always be there
to help you be
the best that you can be.

If something bars
you from happiness,
I will be there to break the chains.

When you are tied-
I will untie you.

I will always care
and I'll do my best
to be the one
friend you need.

A good friendship doesn't
come often.
And this one
I want to keep.

So when you hurt,
and when you cry
look at the Moon...
think of me.

When you need someone
to hold your hand
look at the moon...
imagine me.

If you need someone
to get him off your mind,
look at the moon...
call me.

If you need to talk
or just sit by someone,
look at the moon...
I'll be there;
just look at the moon
and you'll see me.

Jessica Meicht, 31, wrote this piece for a friend who was dealing with chronic depression. Jessica lives with Borderline Personality Disorder and believes that people with mental illness deserve empathy and above all, more understanding. *First year in UNIQUE.*

PARADISE

MINNIE THOMPSON

Sculpey & Colored Sand | 15.5" x 17.25"



RECIPE BOX

ORAMELLA PUTMAN

Wood | 7.5" x 10.5" x 4.75"



Minnie Thompson, 68, uses pearls in her piece to reflect her love of fashion and jewelry. She has always loved wearing pearls – in fact when she was a child, her nickname was Minnie Pearl. *Previously in UNIQUE 2016.*

Oramella Putman, 47, was born and raised in Oneida. She likes art, animals, and camping. She chose to feature Shirley Temple on the box because she, along with her family, are big fans. *Previously in UNIQUE 2009 and 2015.*



PRICKLY PEAR

FRANCES PIZZOLA

Watercolor | 12" x 9"



SPRING'S FIRST BLOOM

KAREN KOEGEL

Mixed Media | 20" x 16"

Frances Pizzola, 55, didn't think she would be able to paint again after her spinal cord injury. However, she shares that during rehab she realized that the talent was not within her hands and fingers, but in her soul. *First year in UNIQUE.*

Karen Koegel, 51, has a strong prayer life and goes to church as often as she can. She loves the seasonal changes and looks forward to spring each year. This painting was made as a way to create joy when she was experiencing a lot of physical and emotional pain. *Previously in UNIQUE 2016.*

MR. SQUIRREL

CHASE SALMONS
Ceramic | 5" x 4.5" x 2.75"



A TOUCH OF RADIANCE

BRIANNA RHODES
Acrylic | 12" x 16"



Chase Salmons, 16, is from Camillus and has a very rare syndrome that has caused him to have many serious surgeries. He created this squirrel sculpture to reflect how his mind always races and because he loves trying to find squirrels jumping around. *First year in UNIQUE.*

Brianna Rhodes, 18, is from Baldwinsville and has a visual impairment. She enjoys singing, drawing, painting, makeup, and outdoor photography. She finds inspiration around her and chose to create this painting of the Red Mill Inn because of its bright colors. *First year in UNIQUE.*



TREE FROG

DANIEL O'CONNOR

Oil Paint | 12" x 12"



MEMORIES OF FISHING

PETER SMITH

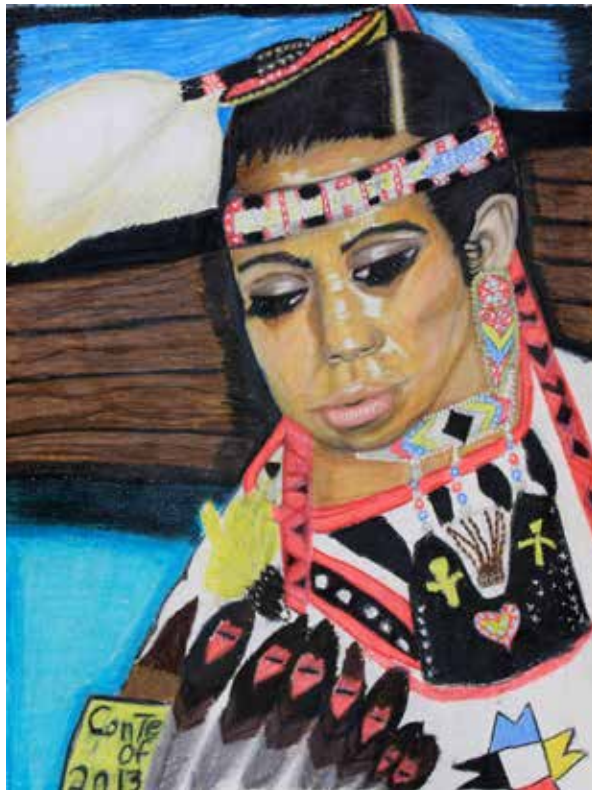
Mixed Media | 18" x 14.25"

Daniel O'Connor, 23, lives in the Town of Onondaga and has autism. He enjoys bowling, swimming, and creating art. In addition to painting, he also likes to work with clay and glass. *Previously in UNIQUE 2015.*

Peter Smith, 67, grew up in England and moved to the United States when he was 24. He created this piece to capture his fun childhood memories of fishing in England. *First year in UNIQUE.*

WOMEN'S JINGLE DRESS CONTEST DANCE

KATHLEEN ROLAND
Mixed Media | 11.25" x 8.75"



THE FLORAL DANCE

KAUSHIK KRISHNAN
Ceramic | 6.5" x 10" x 6.5"



Kathleen Roland, 32, is from Oswego and enjoys making Native American style dance regalia and jewelry. She enjoys speaking Mohawk and sharing information about the culture. *First year in UNIQUE.*

Kaushik Krishnan, 19, tries to overcome his autism with clay and cooking. His goal is to start a business for gluten free products. Krishnan is inspired by his autism and enjoys working with clay because it helps him regulate his body and feel at peace. *Previously in UNIQUE 2013-2016.*



GAHUNDA

JOSEPH RUFO

Graphite | 16.75" x 13.75"



STONE WALL IN FALL

HANNAH RUFO

Photography | 12" x 16.5"

Joseph Rufo, 24, was born with Down syndrome and lives in Fayetteville. He works at SUNY-ESF and is taking a drawing class at Onondaga Community College. He creates art to express himself so that others can look at his work and discover something about him. *Previously in UNIQUE 2010-2016.*

Hannah Rufo, 22, has autism and lives in Fayetteville. She is taking courses at Onondaga Community College and enjoys photography, sewing and baking. She was drawn to the uniqueness of the stones in the wall – each one different, just like each person. *Previously in UNIQUE 2010 and 2014-2016.*

ANXIETY SPIRAL

RICHELLE MAKI
Pen and Ink | 20" x 16"



HUMMINGBIRD HAPPINESS

KATIE WEST
Acrylic | 16" x 12"



Richelle Maki, 46, is an avid skier who is inspired by the world around her. Maki relates the Spirograph tool that she used to create the drawing to the spiraling anxiety attacks that kept her in a constant loop of circular thinking. *Previously in UNIQUE 2013.*

Katie West, 28, lives in North Syracuse and has a learning disability. She likes to create paintings that make others smile. This particular painting was created for her grandfather because hummingbirds are his favorite bird. *Previously in UNIQUE 2016.*



KARMA

JOSH WEBSTER

Acrylic | 16" x 20"



SKATER GIRL

PAMELA PARSONS

Watercolor | 12" x 9"

Josh Webster, 28, lives with a traumatic brain injury but does not let it hold him back. He created this painting because he was bullied throughout this life and wants others to know that they're not alone. *Previously in UNIQUE 2008 -2010, 2012-2014, and 2016.*

Pamela Parsons, 74, is from Syracuse and has cerebral palsy. In addition to decorating her bedroom, going shopping, and getting her hair done, she also enjoys painting with friends and creating art for others. *First year in UNIQUE.*

MULTI-COLORED, MULTI-FACETED MAN (A SELF-PORTRAIT)

ROBERT SZPAK
Oil Pastel | 13" x 10"



SCRAMBLED EGGS

SPRING BREAK
RECREATION PROGRAM
Acrylic and Eggshells | 30" x 24"



Robert Szpak, 68, has an eclectic and expressive style. He studied at the SMFA in Boston as well as Syracuse University. Robert uses art to challenge the faces of his schizoaffective disorder. This piece was created to show his various moods and emotions. *Previously in UNIQUE 2008-2016.*

ARISE at the Farm Spring Break Recreation Program participants created the piece collaboratively by choosing paint colors, filling eggshells, and tossing the vibrant colors at the canvas. *First year in UNIQUE.*



JELLYFISH

MARISSA RAMOS

Mixed Media | 12" x 9.5"



MOTORCYCLE

JEREMIAH WERDEN

Acrylic | 14" x 11"

Marissa Ramos, 15, enjoys running, biking, drawing, watching animations, and playing games. She draws inspiration from the things around her. *Previously in UNIQUE 2013 and 2015.*

Jeremiah Werden, 32, has Down syndrome and lives in Hubbardsville. He is training to become a power lifter and enjoys movies, country music, NASCAR, and bowling. He created this painting for his mother, who has a motorcycle (although not this colorful!). *Previously in UNIQUE 2010, 2012, and 2016.*

UNTITLED

AMANDA CHAMBERLAIN

Acrylic | 41.5" x 21.5"



THE WATERS OF ST. CROIX

ERIN KELLEY

Mixed Media | 17" x 23"



Amanda Chamberlain, 31, uses adaptive paintbrushes and easels to create her colorful paintings. In order to create the striking brush strokes, she thrusts herself toward the canvas and then loosens her arms to drag the paint down the canvas. *Previously in UNIQUE 2015-2016.*

Erin Kelley, 58, created this piece to bring back wonderful memories of being with her family in St. Croix. She created this piece by making her own print designs for the fish and sea shells, watercolor for the background, and embellished it with underwater plants. *Previously in UNIQUE 2007, 2010-2012 and 2014.*



ELECTRIC LIGHT

TANNER WOODLAND

Mixed Media | 21" x 10"

Yes, you are really great!
 You, my mother, in truth and eternity...
 You are an oasis of peace
 You are my world of wisdom
 You are my search for sanity
 You are you in all real turmoils
 You are you, even when life explodes...
 You are you, You Really YOU
 You Really are IRREPLACEABLE!

YOU ARE YOU

KANISHK KRISHNAN

Tanner Woodland, 40, lives in Manlius with his cat Oreo. He loves music and tried to capture the 60's and the electricity of Jimi Hendrix's music with the neon colors. *Previously in UNIQUE 2002, 2006-2007, 2011, and 2013.*

Kanishk Krishnan, 19, is from Manlius and hopes to go to college, study philosophy, and become a writer. Krishnan shares, "Philosophy is my anchor that stabilizes my life amidst the stormy ocean of autism." *Previously in UNIQUE 2015-2016.*

THE UNIQUE EDITORIAL BOARD RECOGNIZES THE TALENT AND CREATIVITY OF THE FOLLOWING ARTISTS AND WRITERS:

Melissa Atkins
Amy Bauter
Sarah Brittenham
Carol Broome
Joshua Candeloro
Jackie Chesebro
Ian Coe
Brittany Cook
Robin DeCirce
Abbey Doerger
Christine Eldred

Jody Goff
Vivian Golding
Patricia Gyurik
Brian Maher
Julianna Johnson
Sujit Kurup
Matthew Leubner
Dawn Liddle
Jody Jane Maillet
Elliot Markis
Marie Martin

Laura Masuicca
Lindsay Mitchell
Tiffany Rosinsky
Jennifer Sloven
Jason Stastny
Kristin Stosal
Daniel Turco
Donna Walrath

DO YOU WANT TO SUBMIT TO UNIQUE?

UNIQUE is published annually to display the creative work of people with disabilities living in Central New York. We welcome submissions of written and visual art. Guidelines and deadlines for UNIQUE 2018 will be announced in March 2018 and will be available at uniquemagazine.org.

CONTACT US

UNIQUE Magazine
c/o ARISE
635 James Street
Syracuse, NY 13203
uniquemagazine.org

ALTERNATIVE FORMATS

Portions of UNIQUE are available in alternative formats upon request.
Please contact ARISE at (315) 671-4643.

WAYS TO SUPPORT UNIQUE

BECOME AN UNDERWRITER

UNIQUE sponsorship celebrates the creative spirit and raises awareness about disabilities by supporting the community exhibitions and printing of the free publication. Sponsorship levels start at \$500.

To learn more, contact Cynda Penfield at (315) 671-2909 or cpenfield@ariseinc.org.

MAKE A GIFT

Your charitable contribution is a strong statement that you share our commitment to celebrating the artistic expression of people of all abilities. Your donation to UNIQUE or other ARISE programs makes it possible for us to continue to provide a wide array of services for people who have all types of disabilities.

ARISE is a 501(c)(3) tax-exempt organization. To make a donation, use our secure online form at ariseinc.org or mail a check to:

ARISE Foundation
635 James Street
Syracuse, NY 13203

TAKE A PIECE OF UNIQUE HOME!

UNIQUE wall calendars and notecards are available for purchase. A portion of the proceeds supports UNIQUE Magazine and ARISE.

You also can order a print of your favorite UNIQUE artwork. Some of the original artwork featured in UNIQUE is available for sale by the artist, and all proceeds of these sales benefit the artists. A list of available artwork is available at uniquemagazine.org.

For information on how to order any of the works, please call (315) 671-2909 or visit our website ariseinc.org for an order form.

ADDITIONAL SUPPORT FOR UNIQUE PROVIDED BY:

UNIQUE DONORS

Maurie Heins



4 STAGES OF GRIEF

ANNA-MARIE KUIPER

Fiber Art | 34" x 48"

FUNHOUSE MIRROR

STEPHANIE MONTERO

Here before this funhouse mirror,
Things are to me a little clearer.
This reflection is not surreal,
Because what I see is what I feel.

Every pain and every ache,
Every twist and every break;
This mirror shows me all that's real,
Because what I see is what I feel.

ARISE

ariseinc.org

635 JAMES STREET, SYRACUSE, NY 13203